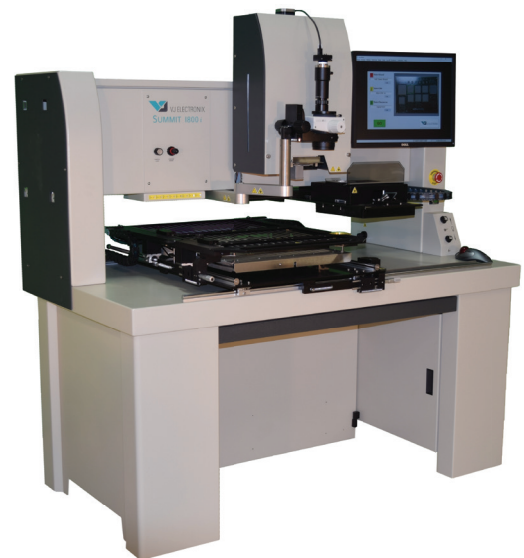


Summit 1800i

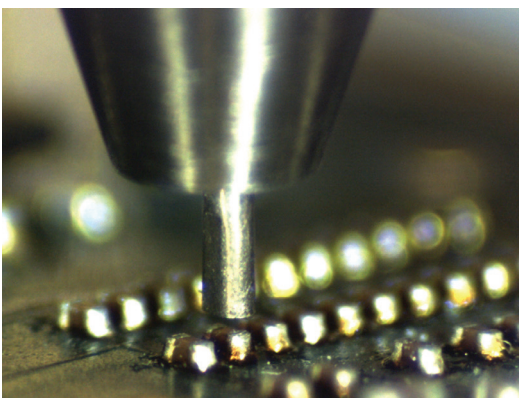
Semi-Automatic Rework System

The Summit 1800i is the latest in the popular Summit series. Carrying forward the leading heating capacity, throughput, repeatability, and reliability of the Summit 1800, the Summit 1800i offers added performance and flexibility.

Redesigned component placement provides improved performance for micro passive devices and connectors. With up to 80mm Field of View, the Summit 1800i meets rework need for today and many years to come.



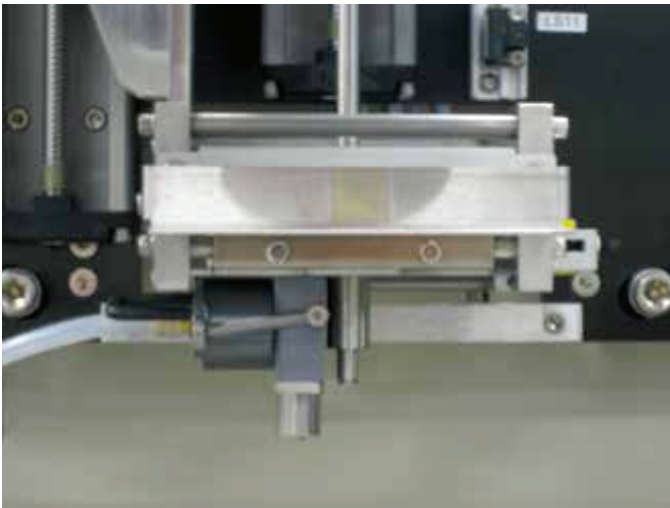
Summit 1800i



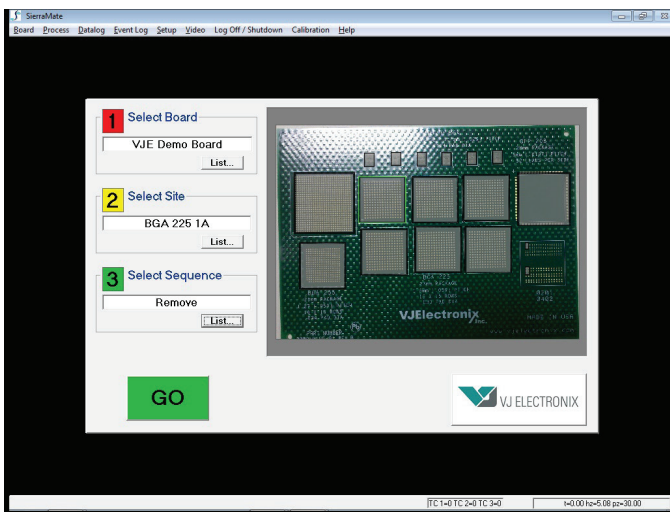
01005 Rework

Key Features

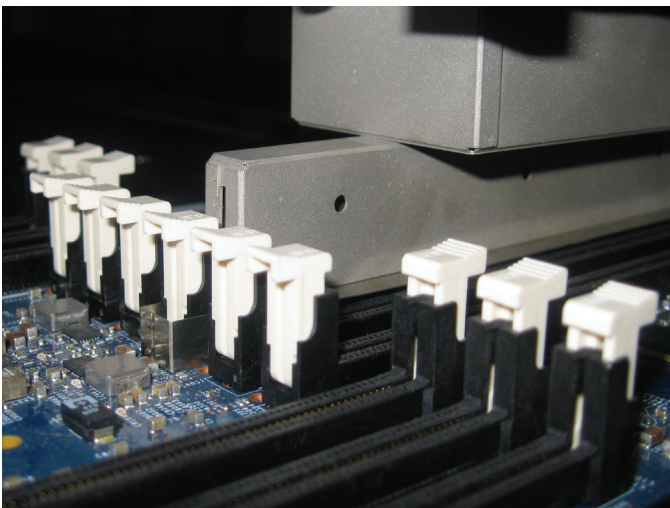
- **Placement Accuracy** – 0.005" (12μ)
- **Top Heater** – 1.6 kw Convection
 - 2.2 kw Top Heater Boost
- **Bottom Heater** – 4.0 kW Convection
 - Optional 7.8 kW Bottom Heater
- **Maximum Board**
 - Standard 18 x 22" (455 x 560 mm)
 - Optional 22 x 30" (560 x 760 mm)



Solder Scavenger with Dynamic Height Sensing Automatic non-contact solder removal



1-2-3-Go Operator Graphical User Interface



Reworking Connectors with Tight Spacing

The Summit 1800i is the premier Surface Mount Rework system. It incorporates proven features and benefits common to all Summit systems plus introduces state-of-the-art innovations to address the latest industry advancements and challenges.

Standard Features:

- SierraMate Software with Auto Profile
- Easy to Use “1-2-3-GO” User Interface
- Independent Heater and Component Pick-up Motions
- Precise Placement with Programmable Force
- Top Heater Cooling Boost and Active Component Cooling
- Zero Force Component Removal
- Six User Thermocouple Inputs

Popular Optional Features:

- Programmable Solder Scavenger with Dynamic Height Sensing
- 22 x 30” Board Support with 7.8 kW Bottom Heater
- 1000 W Bottom Site Convection Heater
- >80 mm Alignment Field of View
- Component Solder Paste Printing



CONFIDENCE DELIVERED